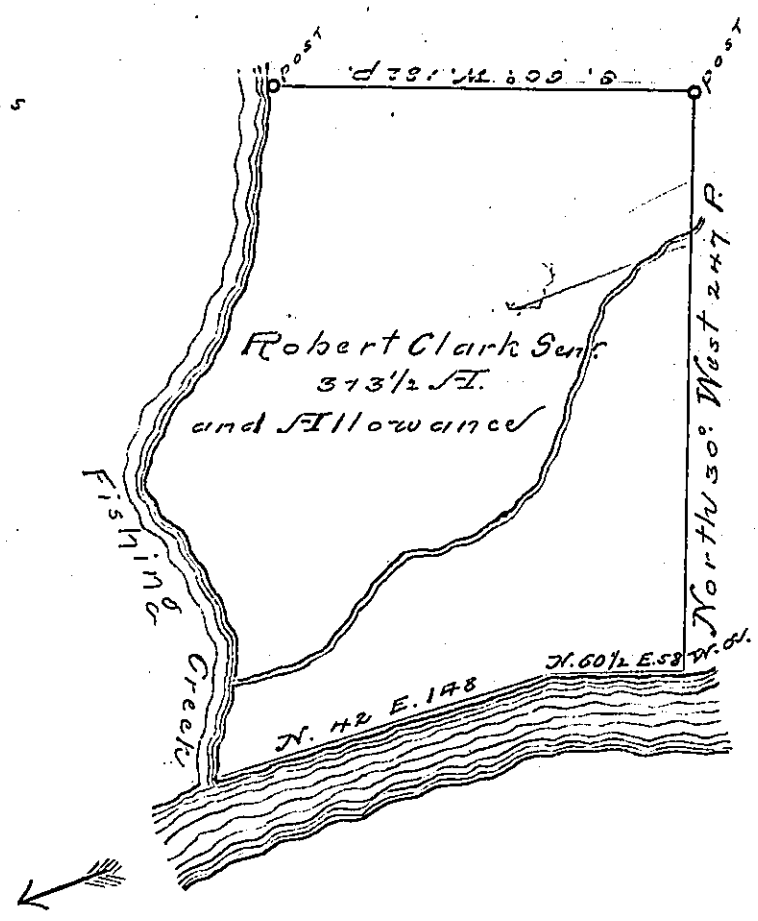


W. Patterson

Courses and Distances

Down Fishing Creek
from a post to the mouth
S. 18° E. 20 Perches

S. 30	E. 38
S. 18	E. 20
S. 10	E. 20
S. 5	W. 20
S. 5	E. 20
S. 10	E. 20
S. 62	E. 20
S. 74	E. 20
S. 61	E. 20
S. 47	E. 20
S. 37	E. 20
S. 20	E. 40
318	



Francis Stuart

A Draught of a Tract of Land called
McClees Retreat situated on the West Side of
the North East branch of Susquehanna at the
mouth of Fishing Creek in Berks County
containing three hundred & thirtent Acres & half
with usual allowance of 6 P. Cent for Roads.

Surveyed 10th August 1769 for Robert Clark Senr
In Pursuance of an Order No 571 dated the 3^d
April 1769.

To
John Lukens Esq
Surveyor General

by
Chas Stewart
Dep. Sur.

IN TESTIMONY that the above is a copy of the original remaining on file in the
Department of Internal Affairs of Pennsylvania, made con-
formably to an Act of Assembly approved the 16th day of
February, 1833, I have hereunto set my Hand and caused
the Seal of said Department to be affixed at Harrisburg, this

— Third — day of — September — 1895.

James W. Patton
Secretary of Internal Affairs.